

English Writing Final Exam

Semester 2, 2014, ZJUNIT, Mr. Hinton

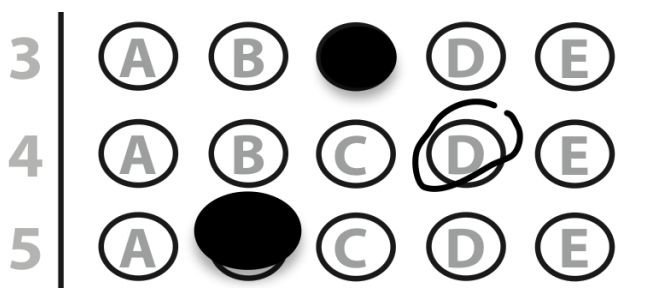
This exam contains both multiple-choice questions (1-6) and open-ended questions (7-14). There are a total of 100 marks in this exam. You must use the blank answer sheet and fill in:

1. Your name and ZJUNIT student number under the heading 'Student Name'.
2. Your Quick Key number (four numbers) under the heading 'Student #'.
3. Your answers for question 1 – 6 **only** under the heading 'Answers'.
Answers for questions 7-14 should be written on the exam paper. Students must not mark or write on any other parts of the answer sheet.

The image shows a sample answer sheet with the following sections:

- STUDENT NAME:** A box containing the name "Ben Hinton" and the student number "3120116666".
- STUDENT #:** A box containing the Quick Key number "0113".
- ANSWERS:** A grid of 30 questions, numbered 1 to 30. Each question has five options: A, B, C, D, and E. The grid is partially filled with black marks.
- Quick Key (QK):** A logo consisting of the letters "QK" inside a square.
- Callout Boxes:** Three black boxes on the right side of the sheet, each with a white number and text:
 - Box 1: "1. Name and ZJUNIT student number." (points to the Student Name field)
 - Box 2: "2. Quick Key number." (points to the Quick Key logo)
 - Box 3: "3. Answer question 1-6." (points to the answer grid)

All markings on the answer sheet should be with a black pen (not pencil). You are not allowed another answer sheet in the exam – so great care should be taken with the original.



Fill inside the circle (3 is OK). Do not circle your answer (4 is NOT OK) or fill outside the circle (5 is NOT OK).

(4 marks) FILL IN YOUR ANSWER ON THE ANSWER SHEET.

1. What does the Latin root 'alg' mean in English:

a. Animal

b. Pain [Correct]

c. Stone

d. Scrape

e. Plant

(4 marks) FILL IN YOUR ANSWER ON THE ANSWER SHEET.

2. What does the Latin root 'ambul' mean in English:

a. Ambulance

b. Sheep

c. Walk [Correct]

d. Song

e. Peace

(4 marks) FILL IN YOUR ANSWER ON THE ANSWER SHEET.

3. What does the Latin root 'vit' mean in English:

a. Move

b. Life [Correct]

c. Quick

d. Drive

e. Bottom

(4 marks) FILL IN YOUR ANSWER ON THE ANSWER SHEET.

4. What does the Latin root 'graph' mean in English:

- a. Stick/Cling
- b. Pour/Melt
- c. Earth
- d. Read/Know

e. Write/Draw [Correct]

(4 marks) FILL IN YOUR ANSWER ON THE ANSWER SHEET.

5. What does the Latin root 'port' mean in English:

- a. Nothing
- b. Song
- c. Tooth

d. Carry [Correct]

e. Word

(4 marks) FILL IN YOUR ANSWER ON THE ANSWER SHEET.

6. When writing a letter of complaint, what is the correct generic order of social stages:

- a. Demand action, Greeting, Sign off, Senders name, Identification of complaint, Justification of complaint
- b. Greeting, Demand action, Identification of complaint, Justification of complaint, Senders name, Sign off
- c. Greeting, Identification of complaint, Demand action, Justification of complaint, Senders name, Sign off

d. Greeting, Identification of complaint, Justification of complaint, Demand action, Sign off, Senders name [Correct]

e. Sign off, Demand action, Greeting, Senders name, Identification of complaint,
Justification of complaint

(4 marks) WRITE YOUR ANSWER HERE – NOT ON THE ANSWER SHEET.

7. List 4 English words that use the Latin root 'trac/tract/treat' that means to pull, draw or drag. If you write less than 4 words or any of your words are incorrect - you will not get any marks for this question.

1. trace
2. tractor
3. retreat
4. treaty

(4 marks) WRITE YOUR ANSWER HERE – NOT ON THE ANSWER SHEET.

8. List 3 English words that use the Latin root 'spec, spic, spect' that means to watch or look at. If you write less than 3 words or any of your words are incorrect - you will not get any marks for this question.

1. specimen
2. conspicuous
3. spectacle

(4 marks) WRITE YOUR ANSWER HERE – NOT ON THE ANSWER SHEET.

9. List 4 English words that use the Latin root 'rupt' that means to break. If you write less than 4 words or any of your words are incorrect - you will not get any marks for this question.

1. interrupt
2. corrupt
3. disrupt
4. rupture

(4 marks) WRITE/DRAW YOUR ANSWER ON PAGE 6 – NOT ON THE ANSWER SHEET.

10. Create a Word Tree on the next page (not this page) for the word

'compensation'. Requirements:

- Have relevant related words.
- Be 50 (fifty) words deep.
- Put a number next to each word (1-50). The teacher **will not** do it for you.
- The tree should be your own style but **NOT** a list.

If you ignore any of these requirements you will not get any marks for this question.

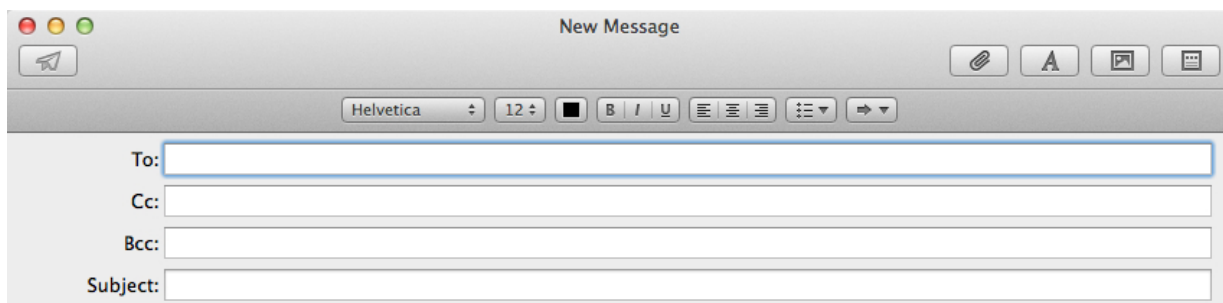
**[Grading criteria – teacher determined relevance according to shortlist of AWL (Academic Word List) supplied to students here:
<http://quizlet.com/43604583/academic-word-list-most-frequent-flash-cards/>]**

(15 marks) WRITE YOUR ANSWER ON PAGE 8 – NOT ON THE ANSWER SHEET.

11. On the next page, write a 'more informal' email to Ken Smith

(kensmith@youcanyouup.com). You must use the phrases you have memorized during class. Requirements:

- Mention your 'Common acquaintance'.
- State your 'Reason for writing'.
- Be 'Giving information' in general.
- Make reference to 'Attachments' with more detailed information.
- Write some 'Final comments' and 'Close'.



MARKER

[Q11 Criteria 1] Mention your 'Common acquaintance'.

11. A/B

[Q11 Criteria 2] Your 'Reason for writing'.

12. A/B

[Q11 Criteria 3] Be 'Giving information' in general.

13. A/B

[Q11 Criteria 4] Make reference to 'Attachments' with more detailed information.

14. A/B

[Q11 Criteria 5] Write some 'Final comments' and 'Close'.

15. A/B